

CK ENGINEERING

ENGINEERED TO FLOW



PIPE CLAMPS & FASTENERS



COMPANY PROFILE

C.K. ENGINEERING is specialized manufacturers & suppliers of pipe clamps, fasteners & G.I full threaded rods, Nut Bolt Washer, C Channels, Slotted Angels, M.S Elbow, M.S. Reducer Socket.

A sharp sense of foresightedness, a dedicated workforce and the use of latest infra structural facilities have enabled C. K. ENGINEERING to earn a reputed goodwill and trust in the market in a very short span of time

High on every parameter of precision, weight, perfection and accuracy, our range of pipe clamps & fasteners is manufactured to be in complete accordance with national and international quality standards.

we have been engaged in the relentless pursuit of delivering excellence in terms of quality competitive price and timely delivery.

SPRINKLER HANGER

Uses

Easy installation
sprinkler hangers especially
for fire fighting systems



U BOLT

Uses

U Bolt is the most
user friendly clamp
of it's design which
is for fast and
easy installation.



PIPE SUPPORT SPLIT CLAMP

Uses

Split pipe support
clamp for vertical,
roof hanging
installations.





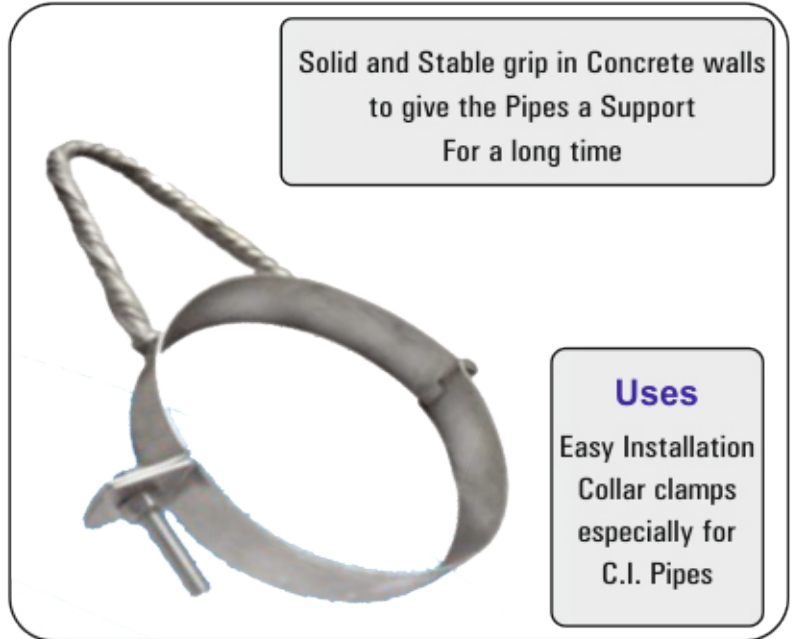
CLEVIS HANGER



Uses

Heavy duty clevis hangers with pendulum movement to adjust varying heights

TOR C.I. COLLAR CLAMP WITH HINGE



Solid and Stable grip in Concrete walls to give the Pipes a Support For a long time

Uses

Easy Installation Collar clamps especially for C.I. Pipes

U CLAMP



Uses

Easy Installation U- clamps can be used for many applications

JOINTER NUT



Uses

For Jointing two or more than Two Threads Rods

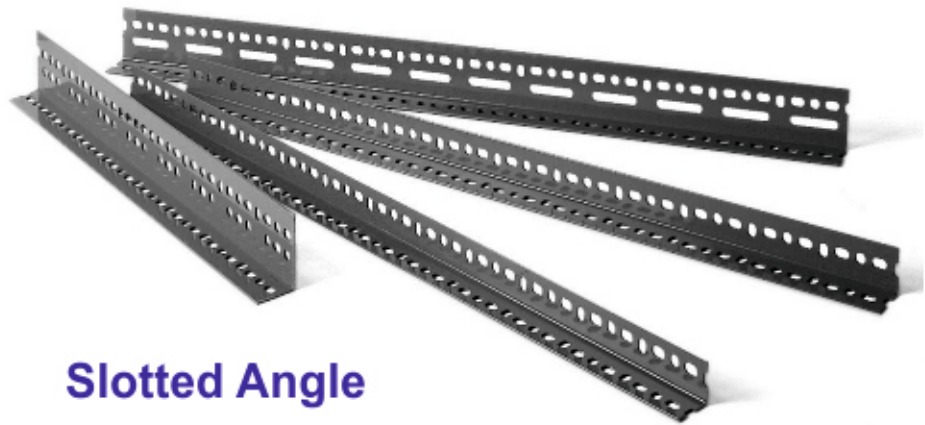


G.I. FULL THREADED ROD



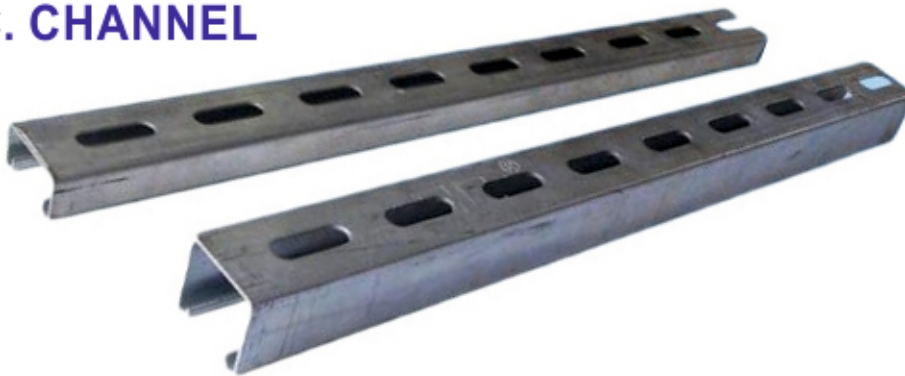
Uses

Slotted Angles is a system of reusable metal strips used to construct shelving, frames, work Benches, equipment stands & other structures.



Slotted Angle

C. CHANNEL



Uses

C Channels are the most versatile, time & cost effective construction material available for building shelves and other storage solutions

Uses

The cable tray is a wonderfully efficient tool used to manage all these wires. With a grounded metal barrier along the centerline to separate power wiring and data/communication cabling, a single large cable tray installation is capable of routing a large amount of wiring.

Cable Tray



MS & GI Flanges



Uses

A flange is a method of connecting pipes, valves, pumps and other equipment to form a piping system. It also provides easy access for cleaning, inspection or modification. Flanges are usually welded or screwed. Flanged joints are made by bolting together two flanges with a gasket between them to provide a seal.

Rubber Gasket



Uses

A gasket is basically a part cut from a (usually) flexible material, which sits in between two other surfaces. Gaskets are typically manufactured from soft materials (such as rubber), and one of the most common uses is for sealing pipes to prevent the leakage of liquids.

MS/GI HOOK



Foundation Bolt



Uses

Foundation bolts are extensively used on all types of projects, from standard buildings to dams and nuclear power plants. They can also be used to firmly affix embed plates to a concrete foundation when used with a structural steel element.

J Hook



**NUT BOLT WASHER
M.S & G.I**



**3 LEAF
ANCHOR
FASTENERS**



M. S. NIPPLE



M. S. ELBOW



M. S. SOCKET



**M. S. REDUCER
SOCKET**



**TS/BULLET
FASTENERS**



**HAMMER
PIPE
NAIL HOOK**

**CUTTING
BLADE**



**STONE
CLADDING
CLAMP**



M. S. LONG BEND



CONNECTION PIPE



SAFETY ITEMS

Safety Shoes



Safety Belt



Safety Helmet



Caution Tape



Safety Jacket



Welding Helmet



Teflon Tape/Electric Tape



Welding Gloves



GI Electrical Saddle



Jubilee Clamp



Wrapping Coating



PVC Nail Clamp



Wrench/Plas



Cable Tie



Dripseal



Pressure Gauge



CP Cap



Packing Rope



Hammer Fasteners



Screw & Gitti



Grinding Wheel



Paint Brush



Tarpin Oil



Hexa Blade & Frame



Through Bolt Fasteners



Soot/Dhaga



M-Seal



Ball Valve



Grease



Wire & Cables



Electrical Box



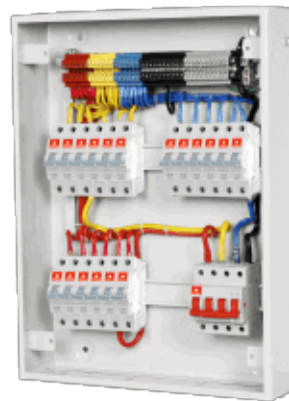
Industrial Socket



Flood Light



TON MCB Box



Welding Machine



THREADING OIL





Angle Grinder Machine

Heat Gun



Cut Off Saw Machine



Marble Cutter Machine



Rotary Hammer



GI Earthing Strip



HOLDTITE



Spanner



Chain Wrench



Holesaw Cutter



Pipe Vice





Fire Blanket

Face Guard



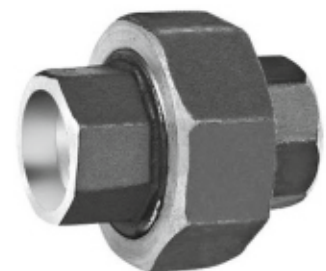
Drill Bits



MS & GI Bush



MS & GI UNION





TAPARIA TOOLS LTD.
AN ISO-9001 COMPANY



FREEMANS

INGCO

PROFESSIONAL TOOLS MADE AFFORDABLE

UNIK

PIPE FITTINGS

Follow us on

M/S C K ENGINEERING

91, Block- D/1, Rohini, Sector-16, Delhi-110085
 Branch Office - 2879, 1st Floor, Gali Jajampuria,
 Bazar Sirkiwalan, Chawri Bazar, Delhi - 110006
 E-mail : ckengineering9311@gmail.com
 Web - www.ckengineeringindia.com
 Ph. : 9811339875, 9958081788, 9654341564

